

Scrutinizer Hardware Requirements

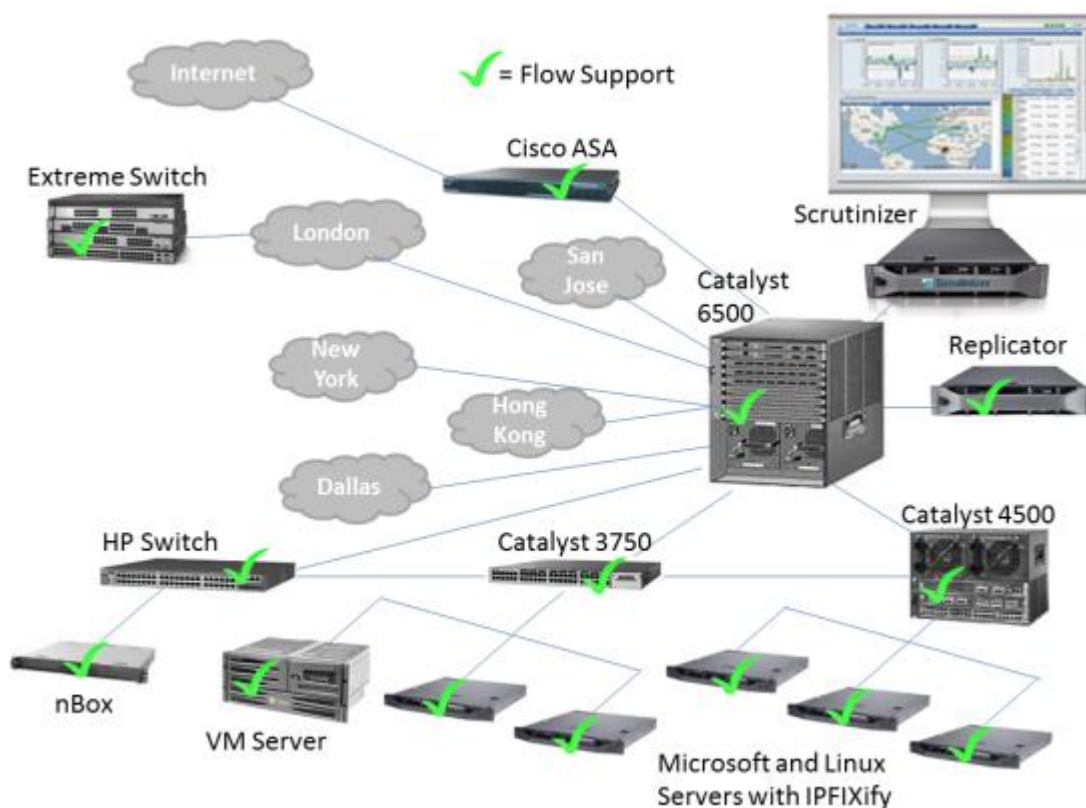
A single Scrutinizer Appliance can handle over 100,000 flows/second from hundreds of routers and switches and represent over a thousand interfaces. It has been engineered for optimal collection and reporting on many flow-based network traffic monitoring technologies such as NetFlow, sFlow, IPFIX, J-Flow, App-Flow, NetStream and more. The Scrutinizer Appliance comes pre-configured with a complete version of Scrutinizer NetFlow & sFlow Analyzer and the necessary related modules to provide the greatest traffic awareness and meet the network monitoring needs of your business.



Below are the minimum requirements for the downloadable windows version of Scrutinizer.

Component	Minimum Specifications (for trial installations)	Recommended Specifications (for production environments)
RAM	4GB	8GB
Disks	50 GB IDE or SATA	1+ TB 15k SCSI in a RAID 0 or 10 configuration
Processor	Dual Core 2GHz+	Quad Core 2GHz+
Operating System	Windows Vista/2008/7	Windows 2008 Server

NOTE: Please keep in mind that the more Flows you push to Scrutinizer, the more resources the software will consume. It is recommended that users purchase the Scrutinizer Appliance if high NetFlow volume (> 10K flows/second) is anticipated.



Scrutinizer Deployment

