

# AutoMate BPA Server 7

The Business Process Automation Server from Network Automation



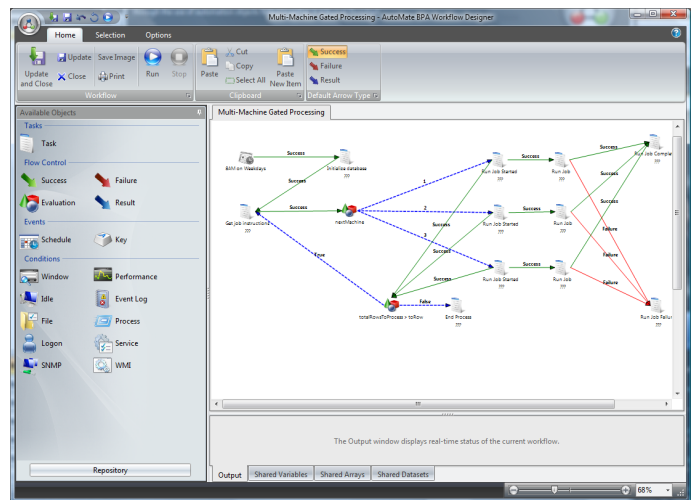
## Product Overview

AutoMate BPA Server 7 represents a significant leap forward in automation technology for the mid-market and one that will give customers a definite edge. As organizations seek to find ways to reduce costs and improve efficiency, they consistently fall short because of the complexities of automating tasks using various scripts, batch files, macros, and other executables. Without a robust Business Process Automation (BPA) platform that provides an easy to use end-to-end solution, the automation process becomes difficult to implement and costly to maintain.

BPA Server 7 raises the bar when it comes to functionality, ease of use, configurability, and cost as compared to other systems that are either very large, very expensive, or both. It is the only product of its kind that offers the kind of power typically found in large enterprise systems with the simplicity found in applications with much less functionality creating the ideal Business Process Automation solution for the mid-market.

## Workflow Designer

The most common way companies attempt to automate business processes is by scheduling dozens of scripts and batch files to run on individual machines. These scripts essentially run randomly and have no intelligence as to what events might occur on other machines or over the network, thereby interfering with the scheduled processes. There is no concept of a coordinated business process running across multiple machines. The scripts require knowledge of syntax or code, and the results themselves are binary: success or failure.



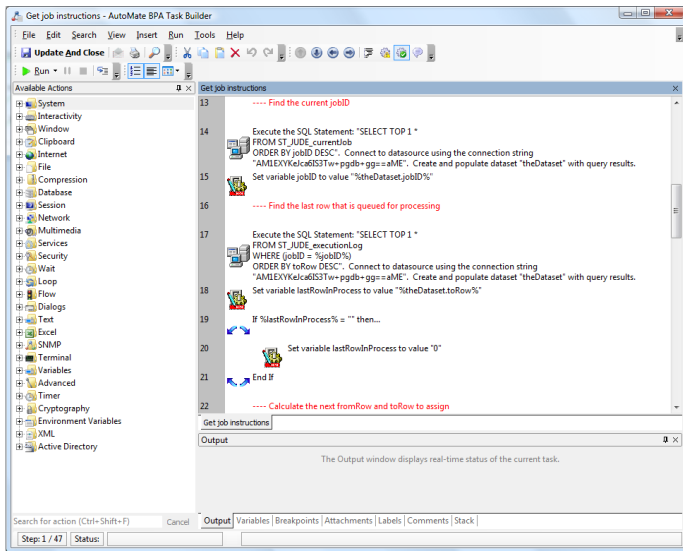
Workflow Designer: Allows for drag-and-drop creation of workflows that can execute on multiple machines.

AutoMate BPA Server 7 creates a platform for the development, management, and execution of coordinated business processes across multiple machines all without writing code. Instead of writing scripts and batch files, processes are detailed graphically as workflows using the Workflow Designer. A workflow is the framework that contains all the objects related to a particular automated process. Workflow objects include:

1. *Tasks* – An individual process created via drag-and-drop using

over 230 prebuilt actions.

2. **Events/Conditions** – A state or occurrence that triggers an automated process to begin including. Workflow Designer has over 12 Events and Conditions including Schedule Event, Folder Watcher Condition, Performance Watcher, Service Watcher, Window Watcher, WMI Event, and many others.
3. **Flow Controls**- Flow Controls allow for high-level conditional logic and decision-making within an automated process offering conditional branching based on the value of a variable / expression, or the success or failure of an object within a workflow.



Task Builder: Offers hundreds of available actions that can be used to build tasks in a matter of moments.

Creating a workflow is as easy as dragging and dropping the objects listed above in the desired configuration. Because of the intuitive and easy-to-use GUI interface, setting up a workflow within AutoMate BPA Server 7 takes a matter of minutes.

## Task Builder

Relying solely on scripts and batch files for process automation is an inherently flawed methodology that leaves an organization vulnerable to many potential problems. Besides lacking the organization and clarity provided by workflows, scripts and batch files require the writing of complex code. A technical resource is now required to automate the desired processes reducing management's visibility into the project. Because this process is unlikely to be the technical resource's sole responsibility within the organization, the debugging and testing of the scripts is often rushed, if even performed at all. If a process fails, the programmer who wrote the script must resolve the issue. In the event that the programmer leaves the organization, "code abandonment" results. Another technical resource must take on the project in order to decipher the other developer's code. If he cannot do so, the entire process must be rewritten from the ground up, thereby repeating the cycle. It is for these reasons that writing code is a time-intensive, difficult to manage, unreliable, and expensive way

of automating business processes.

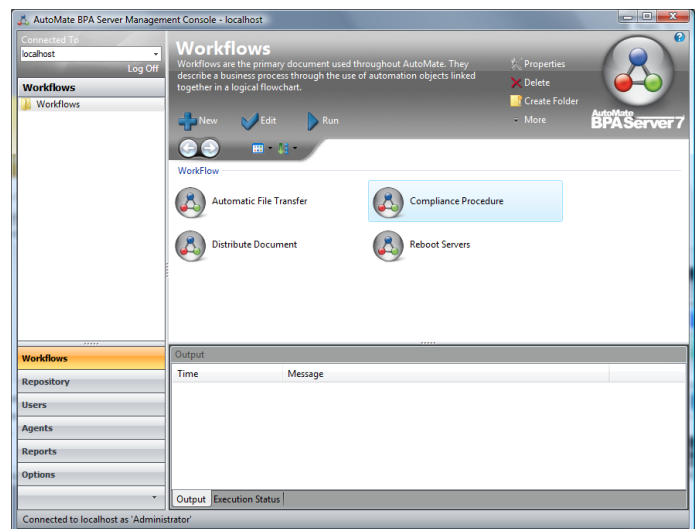
The Task Builder within AutoMate BPA Server 7 eliminates the need for writing scripts and batch files altogether. With over 230 pre-built Actions ranging from sending simple keystrokes to performing Terminal Emulation, the Task Builder enables users to quickly and easily drag-and-drop actions together, creating powerful automated processes without writing code. Task Builder also provides the following important features:

1. **Plain English Display** – All steps within a Task are displayed in Plain English text to eliminate any mysteries about what operation is being performed.
2. **Error Identification** – Errors are clearly displayed and show the step in which the error occurred for easy debugging of Tasks.
3. **Error Handling** – Functionality is built into the Task Builder allowing Tasks to take corrective action automatically, or notify someone of the error.

Building Tasks in AutoMate BPA Server 7 using the Task Builder enables organizations to automate their business processes quickly, easily, reliably, and affordably, all without the need for writing code.

## Server Management Console

Management of automated processes at organizations without a complete BPA solution is fragmented at best. Often Windows Task Scheduler or another job schedule is used to start scripts and batch files on individual machines. Anyone with access can schedule an executable to run on any available machine, exposing serious security concerns. With no concept of a Workflow, each task is run individually with limited reporting, making near impossible the management of the entire process. The lack of centralized management for automated processes contributes to compliance



Server Management Console: Manages all of your tasks and workflows centrally.

violations, lower productivity, and creates greater inefficiency in the workplace.

The Server Management Console (SMC) within AutoMate BPA Server 7 solves this problem by providing centralized management and administration for all of the automated processes and Agents in a distributed network. The SMC offers several key features designed to address the problems described above. These features include the following:

1. *User-Based Roles, Rights, and Views* – Security issues are handled by assigning users specific roles, rights, and views.
2. *Reporting* – Workflow performance reporting is also centralized so administrators can easily monitor operations and quickly react to any exceptions. Workflow execution can be viewed in real time or historically providing summary graphs, charts and tables to display the status and properties. This enables operators to see the entire system status on a high level.
3. *Repository* – The SMC provides an Object Repository which allows administrators and developers to have access to all objects (workflows, tasks, and conditions) so they can be easily edited and incorporated into new workflows. Any change to an object in the Repository is applied globally to any workflow in which the object is in use dramatically reducing the time spent on Task and Workflow maintenance.
4. *Agent Management* – The Management Console provides tools for installing and uninstalling Agents responsible for workflow processing. Administrators can see all Agents connected to the Server as well as the maximum number of Agents the Server can support.

The features listed above give management full visibility into the application, allowing them to quickly and accurately monitor the efficiency, productivity, and state of compliance pertaining to their automated business processes.

## Licensing Model

Network Automation products are licensed on a per machine basis. Each machine used for management, development, or execution of an automated business processes using BPA Server will require a license. Below is a brief description of each licensed product part of the AutoMate BPA Server 7 solution:

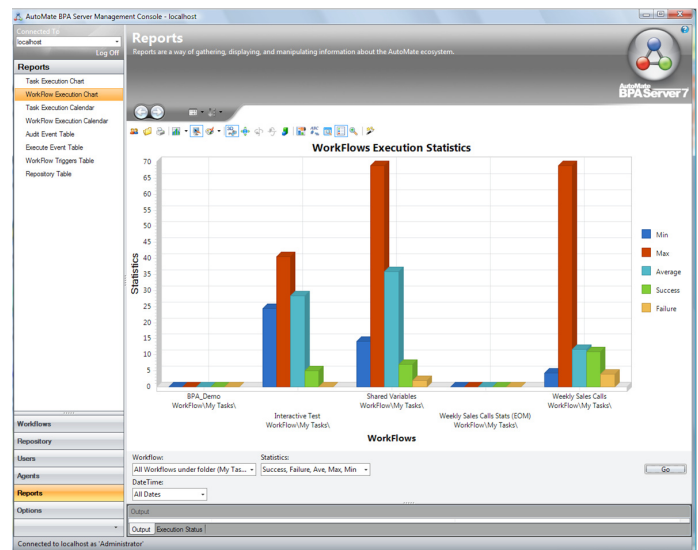
1. *Server* – The Server provides all of the management and reporting capabilities for AutoMate BPA Server 7 including the Server Management Console.
2. *Development Tools* – The Development Tools are used to create the actual automated processes and include the Workflow Designer and Task Builder.
3. *Client Access License* – Each Client Access license enables the use of an Agent for execution of tasks and workflows on one machine.

The purchase of AutoMate BPA Server 7 includes 1 Server for management capabilities, 1 set of Development Tools for the development of Tasks and Workflows, and 1 Client Access License (CAL) for execution of tasks workflows. Additional Development Tools and Client Access Licenses are sold separately.

## Editions Overview

AutoMate BPA Server 7 offers two editions: Standard and Enterprise. The Enterprise Edition offers all the features found in the Standard Edition along with the following:

1. *Unlimited Number of Agents* – AutoMate BPA Server 7 allows for the centralized management of tasks and workflows over your network. Purchasing the Enterprise Edition allows an unlimited number of Agent connections to the Server. Custom-



Reports: Enables real-time execution statistics on all your tasks and workflows.

ers requiring execution on more than 10 machines will require the Enterprise Edition. The number of Agents that can connect to your installation of AutoMate BPA Server is governed by the number of Client Access Licenses (CALs) registered on the Server. Enterprise Edition enables customers to purchase and register an unlimited number of CALs, while Standard Edition limits the number of connected Agents to a maximum of 10 machines.

2. *User Accounts* – For any organization with multiple people involved in the automation lifecycle, the benefits of user accounts are substantial. With the Enterprise Edition, Administrators can create an account for each user and assign a role to restrict what changes the user can make to the system. Obviously, this greatly enhances security; if a user does not have an account, that user cannot gain access to the system.
3. *User Roles and Object Promotion* – User accounts and roles

also enable tight control of the progression of automation projects throughout the automation lifecycle, from initial development into a testing environment resulting in full scale production. Administrators and Managers can assign a completion state to a workflow or a task. Options for the completion state include In Development, Testing, Production, and Archive. Object promotion prevents tasks and workflows from being put into production before they have been thoroughly tested. This will ensure quality and compliance in your production environment.

4. *Workflow and Task Auditing* – User accounts also improve system transparency and communication between team members. Enterprise Edition enables tracking of activities in AutoMate BPA Server 7, such as user connection, workflow/task creation, and deletion. This allows team members to access information quickly to resolve issues or unexpected changes. Monitoring activities helps enforce internal compliance, and otherwise prevents tampering of mission-critical tasks and workflows. Monitoring team members involved in the development and editing of tasks and workflows helps Administrators and Managers keep track of project status and progress. Projects are better managed when responsibilities are divided based on user roles.

These features are designed to offer greater security, organization, reporting, and deployment options to the businesses that require them. While not every company will need the robustness of the Enterprise Edition, it will prove invaluable to those with larger or

more demanding implementations of AutoMate BPA Server 7.

## Benefits

The technology found within AutoMate BPA Server 7 overshadows other more expensive products by automating highly complex business and IT process across distributed networks without the need for writing code. The AutoMate BPA Server 7 solution includes workflow capability, drag-and-drop development, multi-machine functionality, extensive security provisions, and centralized management, all in one complete platform.

AutoMate BPA Server 7 reduces application development time by more than 50% in most cases through the use of its GUI-based Task Builder and Workflow Designer. Saving this time on application development saves money while still providing powerful tasks and workflows that streamline and automate manual or otherwise inefficient IT and business processes. These tasks and workflows eliminate human error altogether from existing processes. The SMC offers centralized management and intuitive reporting significantly reducing TCO.

For all these reasons, it is no surprise that most customers report complete ROI within 3 months of implementation. Please join the more than 15,000 customer worldwide who have already discovered the power, flexibility, and cost savings provided by AutoMate BPA Server 7.

## Contact Us:

FOR MORE INFORMATION ON BPA SERVER 7  
PLEASE CONTACT:

Sales  
Network Automation, Inc.  
213-738-1700 x1  
[sales@networkautomation.com](mailto:sales@networkautomation.com)